



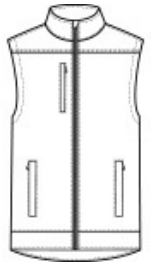
Soft shell technology meets durable duck cloth in this hardworking, water-resistant vest that has an ultra-warm fleece interior.

- 100% cotton canvas shell with a DWR finish bonded to a water-resistant film insert and 100% polyester microfleece lining
- Metal front zipper
- Zippered chest pocket
- Zippered hand pockets
- Three interior pockets

\*\*

**CARE INSTRUCTIONS**

Machine Wash Cold. Gentle Cycle. Only Non-Chlorine. Bleach When Needed. Line Dry. Cool Iron If Necessary. Do Not Dry Clean.



front



back

**HOW TO MEASURE**



**CHEST WIDTH**

Measure under the arm and around the fullest part of the chest with arms down, keeping tape horizontal.

**SIZE CHART**

	XS	S	M	L	XL	2XL	3XL	4XL
Chest	32-34	35-37	38-40	41-43	44-46	47-49	50-53	54-57

**COLOR INFORMATION**



Black  
PMS BLACK C



Duck Brown  
PMS 7568C